

TYPE: PSC - STANDARD SCRAPER CUPS

Product Spare scraper cups for pig series 1

Group Replacements for pig series no. 1

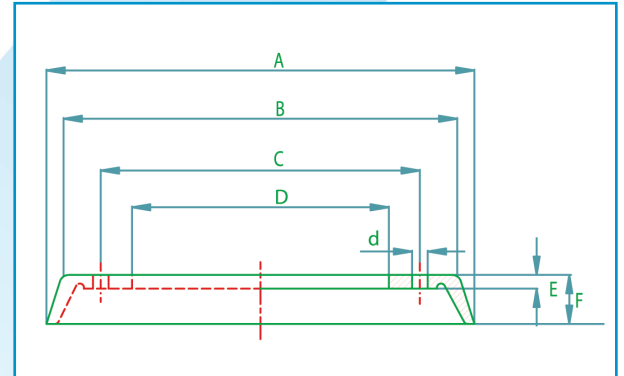
Type PSC options available

- Dimensions as per customer data

Note; Column $\varnothing C$ / $\varnothing D$ / $\varnothing d$ and No. holes.

Second figures sizes 10 – 12 and 14" only applicable for model PE/MB/S2-1, PE/MB/G2 and PE/MB/C2.

Other figures applicable for all other standard scraper cup designed pigs.



Size (inches)	$\varnothing A$	$\varnothing B$	$\varnothing C$	$\varnothing D$	E	F	$\varnothing d$	No. holes
4	114	95	x	20	15	30	x	X
6	170	145	x	20	20	40	x	X
8	225	190	x	20/33	20	60	x	x
10	273	245	x/102	33/64	25	65	x/10	x/4
12	323	297	x/132	33/83	25	65	x/10	x/4
14	360	325	x/145	33/89	25	65	x/10	x/4
16	410	365	279	220	30	70	12	8
18	460	430	324	260	30	70	12	8
20	515	475	343	280	30	70	12	12
22	560	520	343	300	30	85	12	12
24	610	570	419	370	30	85	12	14
26	670	625	419	370	35	85	12	14
28	710	670	495	410	35	90	12	16
30	765	730	495	410	35	90	12	16
32	815	770	540	460	35	90	12	18
34	865	830	580	511	35	90	12	18
36	915	880	635	560	40	90	12	22
38	970	930	686	613	40	110	12	24
40	1020	980	762	714	40	120	12	28
42	1070	1030	795	690	40	120	12	32
48	1225	1180	927	867	40	120	12	32
56	1425	1365	1083	915	50	140	22	18