

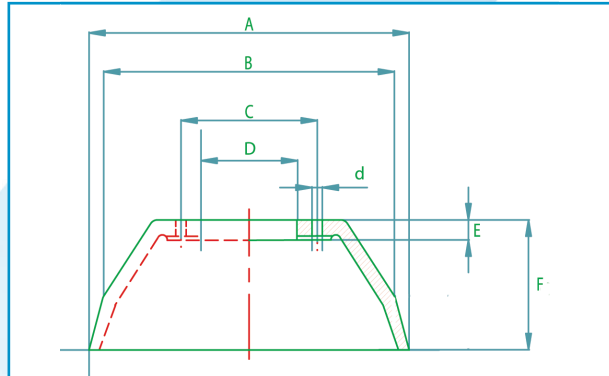
## TYPE PCC - CONICAL CUPS

**Product** Spare conical cups for pig series 3  
**Group** Replacements for pig series no. 3

### Type PCC options available

- Dimensions as per customer data

Type PCC - Conical Cups (1002.01)



Size (inches)	Ø A	Ø B	Ø C	Ø D	E	F	Ø d	No. holes
4	110	102	x	20	15	40	x	x
6	165	153	x	20	20	60	x	x
8	214	203	x	33	20	80	x	x
10	267	254	x	33	23	100	x	x
12	316	305	x	33	23	120	x	x
14	348	336	x	33	23	140	x	x
16	415	387	216	162	23	140	12	8
18	460	438	267	213	23	140	12	12
20	510	489	267	213	23	140	12	12
22	560	540	330	264	23	160	12	14
24	610	590	330	264	23	160	12	14
26	660	641	381	314	25	180	12	16
28	713	692	381	314	25	180	12	16
30	765	743	457	390	25	210	12	18
32	815	794	457	390	28	210	12	18
34	865	845	508	441	28	250	12	22
36	920	895	508	441	30	250	12	22
38	970	946	610	530	30	250	12	24
40	1020	997	610	530	35	250	12	24
42	1070	1047	610	530	35	250	12	24
48	1225	1200	711	632	40	290	12	28
56	1425	1403	862	770	50	320	12	28