

TYPE: PSD - SEALING DISCS

Product Spare sealing discs for pig series 2 and 3

Group Replacements for pig series 2 and 3

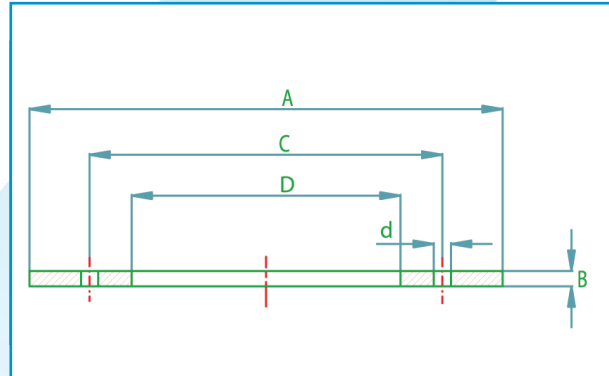
Type PSD options available

- Dimensions as per customer data

Sealing discs bidirectional pigs + conical pigs

Note; Column $\emptyset C/\emptyset d$ and No. holes pig sizes 16" up to 56" First figures applicable for sealing discs fitted conical designed pigs.

Second figures applicable for sealing discs fitted on bi-directional pigs.



Size (inches)	$\emptyset A$	B	$\emptyset C$	$\emptyset D$	$\emptyset d$	No. holes
4	115	6	X	20	X	x
6	167	8	X	20	X	x
8	215	10	X	33	X	x
10	273	12	X	33	X	x
12	324	15	X	33	X	x
14	355	15	X	33	X	x
16	406	15	216/230	162/180	12/18	8/6
18	457	18	267/250	213/200	12/18	12/6
20	508	18	267/280	213/220	12/18	12/6
22	559	21	330/330	264/270	12/18	14/6
24	610	21	330/355	264/280	12/18	14/6
26	660	25	381/395	314/320	12/18	16/8
28	711	25	381/420	314/340	12/18	16/8
30	762	25	457/465	390/380	12/22	18/8
32	813	25	457/495	390/410	12/22	18/8
34	864	25	508/530	441/440	12/22	22/12
36	914	28	508/560	441/470	12/22	22/12
38	965	28	610/600	530/510	12/22	24/12
40	1016	28	610/640	530/545	12/22	24/14
42	1066	28	610/675	530/575	12/22	24/14
48	1219	32	711/790	632/670	12/22	28/16
56	1422	35	862/1035	770/965	22/26	28/18