

TYPE: PGD - GUIDING DISCS

Product Spare guiding discs for pig series 2 and 3
Group Replacements for pig series 2 and 3

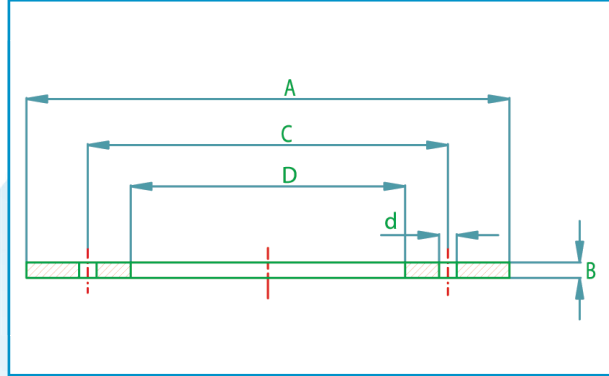
Type PGD options available

- Dimensions as per customer data

Guiding discs bidirectional pigs + conical pigs

Note; Column ØC/Ød and No. holes pig sizes 16" up to 56" First figures applicable for guiding discs fitted conical designed pigs.

Second figures applicable for sealing discs fitted on bi-directional pigs.



Size (inches)	Ø A	B	Ø C	Ø D	Ø d	No. holes
4	104	10	x	20	x	X
6	155	15	x	20	x	X
8	205	18	x	33	x	X
10	257	21	x	33	x	X
12	306	21	x	33	x	X
14	338	21	x	33	x	X
16	389	25	216/230	162/180	12/18	8/6
18	439	25	267/250	213/200	12/18	12/6
20	490	25	267/280	213/220	12/18	12/6
22	540	30	330/330	264/270	12/18	14/6
24	592	30	330/355	264/280	12/18	14/6
26	643	35	381/395	314/320	12/18	16/8
28	694	35	381/420	314/340	12/18	16/8
30	745	38	457/465	390/380	12/22	18/8
32	796	38	457/495	390/410	12/22	18/8
34	846	38	508/530	441/440	12/22	22/12
36	897	43	508/560	441/470	12/22	22/12
38	948	43	610/600	530/510	12/22	24/12
40	999	45	610/640	530/545	12/22	24/14
42	1050	45	610/675	530/575	12/22	24/14
48	1202	50	711/790	632/670	12/22	28/16
56	1405	60	862/1035	770/965	22/26	28/18